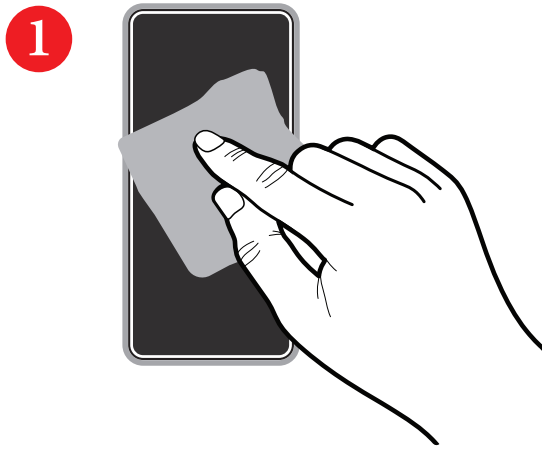
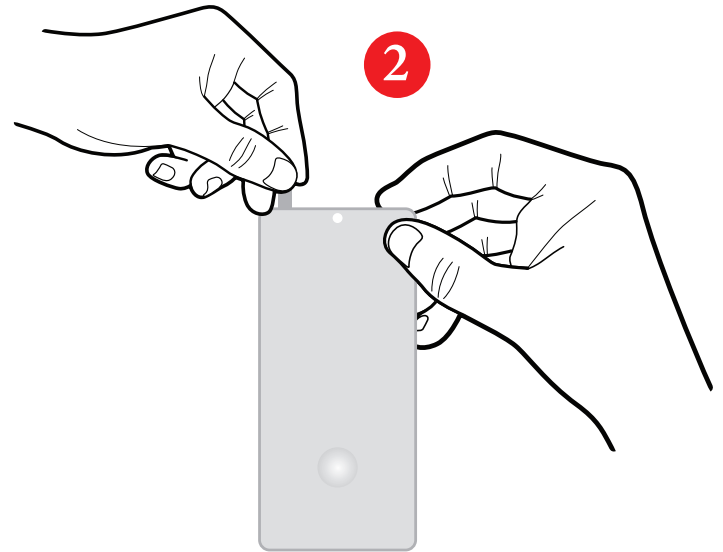


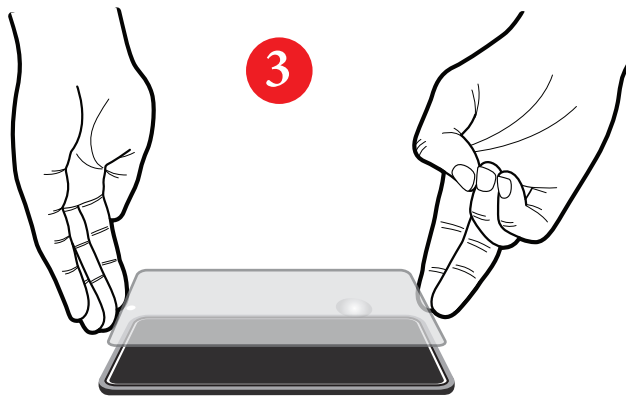
HOW TO APPLY



Clean your device screen with the included wipe to remove any dust or debris. Dry the screen with the microfiber cloth.



Remove the liner from the adhesive side of the tempered glass. Do not touch the adhesive side after the film is removed.



Align the tempered glass to the screen of your device with the adhesive side facing down, lift to realign as needed.



Once the tempered glass is aligned with your device, press firmly on it to secure the position.

ATTENTION

GO TO YOUR PHONE SETTINGS AND RESCAN FINGERPRINT AFTER APPLICATION.