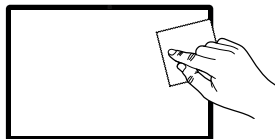


INSTRUCTIONS TO APPLY THE SCREEN PROTECTOR ON MAIN DISPLAY

Please carefully read all the instructions and maintain patience during the screen protector application process.

STEP 1



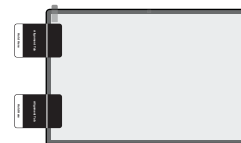
Make to park your vehicle in a well-lit area with minimal dust particles. Switch your screen to a horizontal position. Clean the main display using the provided wipes, and then dry it with the included microfiber cloth.

STEP 2



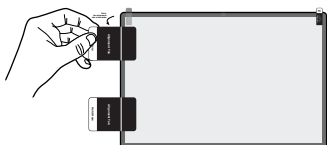
Position the screen protector on the main display with the Tab 1 side facing downward.

STEP 3



Position the supplied alignment tabs on the left side of the screen protector, ensuring that the white solid line is aligned with the edge.

STEP 4



Affix the alignment tab to the left side of the display as depicted in the diagram above, creating a hinge that allows you to open the screen protector like a book. Ensure that the screen protector is precisely aligned with the display screen.

STEP 5



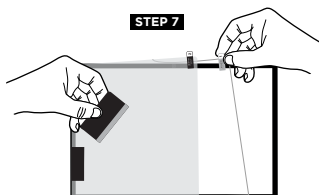
Unfold the screen protector to one side and thoroughly clean the device screen. Take your time to thoroughly eliminate all dust particles from the screen, utilizing the dust removers provided in the installation kit.

STEP 6



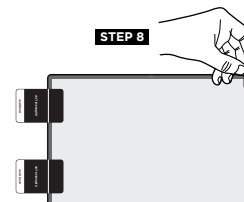
After ensuring the screen is clean, gently pull tab 1 to peel off the protective layer.

STEP 7



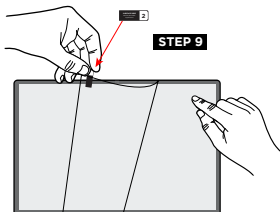
Affix the screen protector onto the display screen, and using the squeegee, gently apply pressure to eliminate any air pockets or bubbles on the screen.

STEP 8



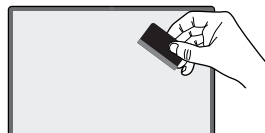
Repeat the previously mentioned step as necessary to ensure the removal of all air pockets and bubbles. Detach the alignment tab from the edge of the display screen.

STEP 9



Hold the screen with one hand and peel off the top layer by pulling tab 2 (surface side). Make sure not to pull the tab by itself.

STEP 10



Gently use the squeegee to eliminate any air pockets or bubbles from the screen.

If you observe any dust particles trapped on the screen, affix a dust remover tab onto the screen protector. Gently lift the screen protector and use a second dust remover tab to remove the dust. Then, repeat step 9 to finish the application. Tiny bubbles may be visible and could take up to 24 hours to completely disappear.

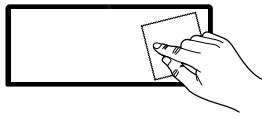


Tiny bubbles may be visible and could take up to 24 hours to completely disappear.

INSTRUCTIONS TO APPLY THE SCREEN PROTECTOR ON INSTRUMENT CLUSTER DISPLAY AND SECOND ROW DISPLAY

Please carefully read all the instructions and maintain patience during the screen protector application process.

STEP 1



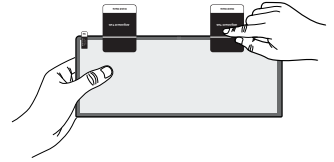
Clean the Instrument Cluster Display / Second Row Display using the provided wipes, and then dry it with the included microfiber cloth.

STEP 2



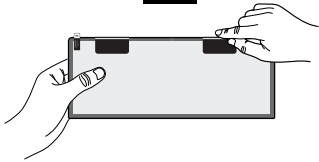
Position the screen protector on the display with the Tab 1 side facing downward.

STEP 3



Place the provided alignment tabs on the upper side of the screen protector, making sure the white solid line aligns with the edge.

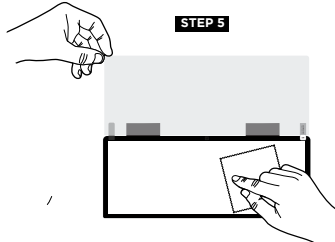
STEP 4



Affix the alignment tab to the upper side of the display as depicted in the diagram above, creating a hinge that allows you to open the screen protector like a book.

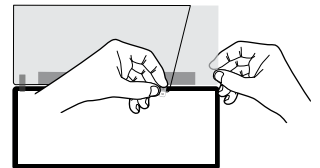
Ensure that the screen protector is precisely aligned with the display screen.

STEP 5



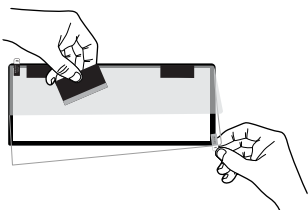
Unfold the screen protector to one side and thoroughly clean the device screen. Take your time to thoroughly eliminate all dust particles from the screen, utilizing the dust removers provided in the installation kit.

STEP 6



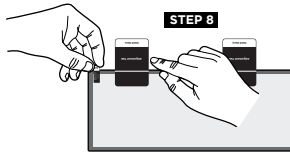
After ensuring the screen is clean, gently pull tab 1 to peel off the protective layer.

STEP 7



Affix the screen protector onto the display screen, and using the squeegee, gently apply pressure to eliminate any air pockets or bubbles on the screen.

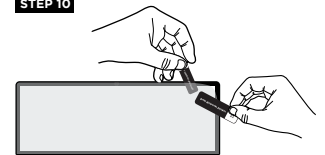
STEP 8



Repeat the previously mentioned step as necessary to ensure the removal of all air pockets and bubbles.

Detach the alignment tab from the upper edge of the display screen. Hold the screen with one hand and peel off the top layer by pulling tab 2 (surface side).

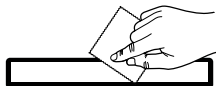
STEP 10



If you observe any dust particles trapped on the screen, affix a dust remover tab onto the screen protector. Gently lift the screen protector and use a second dust remover tab to remove the dust. Then, repeat step 9 to finish the application.

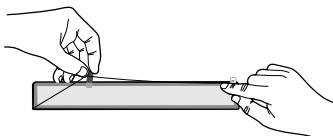
INSTRUCTIONS TO APPLY THE SCREEN PROTECTOR ON CONTROLS DISPLAY

STEP 1



Clean the Controls Display using the provided wipes, and then dry it with the included microfiber cloth.

STEP 2



Position the screen protector on the display with the Tab 1 side facing downward to ensure coverage.

Clean the device screen, take your time to thoroughly eliminate all dust particles from the screen, utilizing the dust removers provided in the installation kit.

After ensuring the screen is clean, gently pull tab 1 to peel off the protective layer.

STEP 9



Gently use the squeegee to eliminate any air pockets or bubbles from the screen.



Tiny bubbles may be visible and could take up to 24 hours to completely disappear.

STEP 3



Affix the screen protector onto the display screen, and using the squeegee, gently apply pressure to eliminate any air pockets or bubbles on the screen.

Repeat the previously mentioned step as necessary to ensure the removal of all air pockets and bubbles.

Hold the screen with one hand and peel off the top layer by pulling tab 2 (surface side).

STEP 4



Gently use the squeegee to eliminate any air pockets or bubbles from the screen.

If you observe any dust particles trapped on the screen, affix a dust remover tab onto the screen protector. Gently lift the screen protector and use a second dust remover tab to remove the dust. Then, repeat step 9 to finish the application.

Tiny bubbles may be visible and could take up to 24 hours to completely disappear.