

ARTEZIS™

SHIELDS

Infotainment Displays

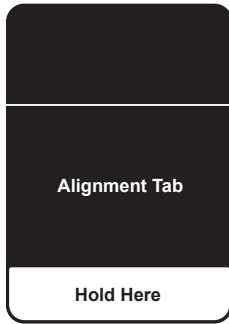
HOW TO APPLY

APPLICATION KIT

x6



x6



WET WIPES



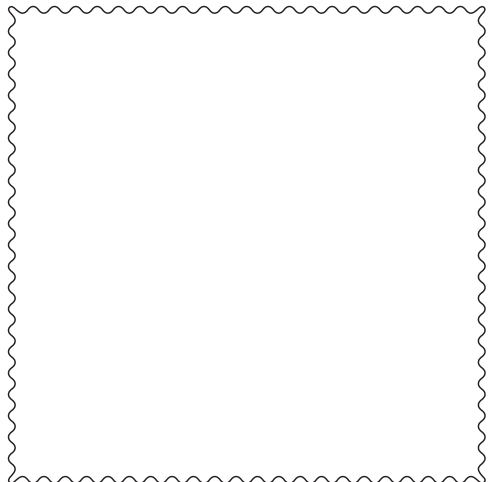
SQUEEGEE



OR



MICROFIBER CLOTH

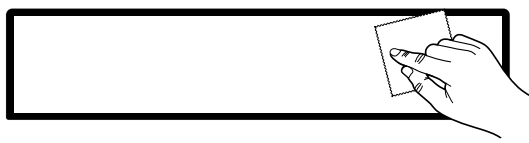


PLEASE READ ALL THE INSTRUCTIONS AND BE PATIENT WHILE APPLYING THE SCREEN PROTECTOR

The application methods are identical for both curved and flat display screens.

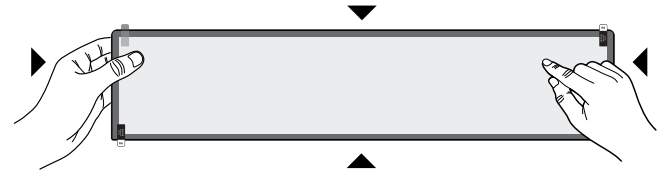
ENSURE THAT THE INTERIOR OF YOUR VEHICLE IS FREE OF DUST, AND THAT THE DASHBOARD HAS ADEQUATE LIGHTING

STEP 1



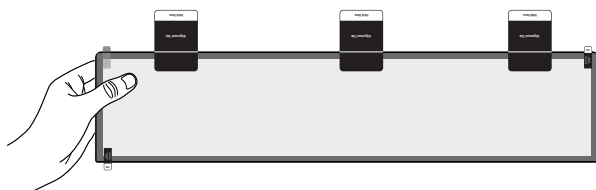
Wipe your device screen using the provided wet wipe, then dry it with the microfiber cloth. Also, ensure there are no dust particles around the screen edges or on the display surface.

STEP 2



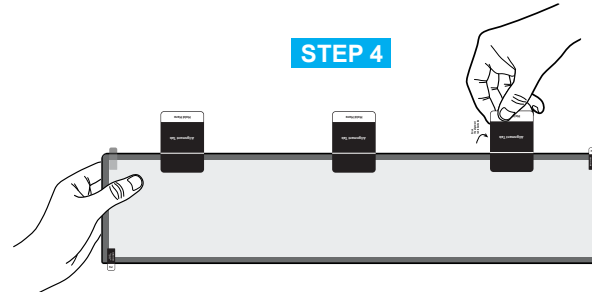
Place the screen protector on your device with the adhesive side (Tab 1) facing downward.

STEP 3



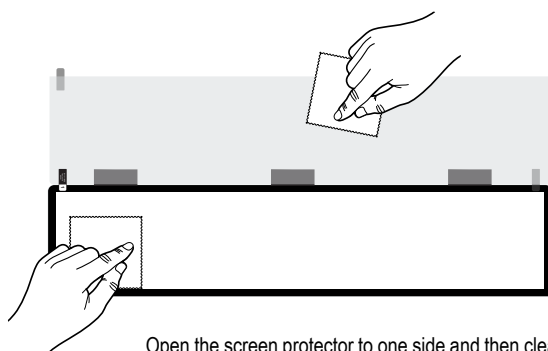
Align the alignment tab on the screen protector, making sure the white line matches both sides of the device.

STEP 4

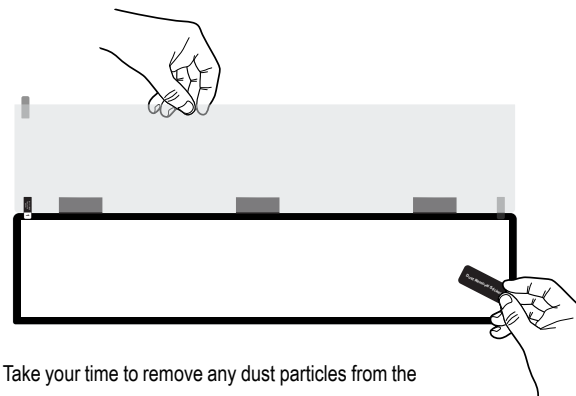


Affix one side of the alignment tab to your device, creating a hinge to open the screen protector like a book. Ensure the screen protector is perfectly aligned with the screen.

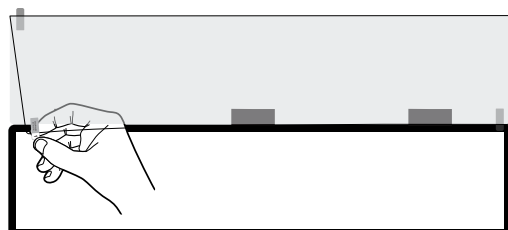
STEP 5



Open the screen protector to one side and then clean the device screen meticulously. Take your time to remove any dust particles from the screen and the bezel/edge, utilizing dust removers if needed.

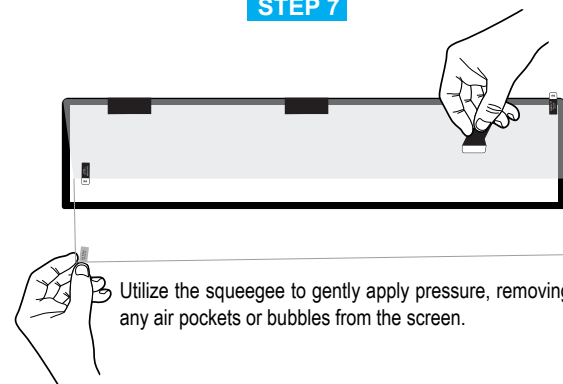


STEP 6



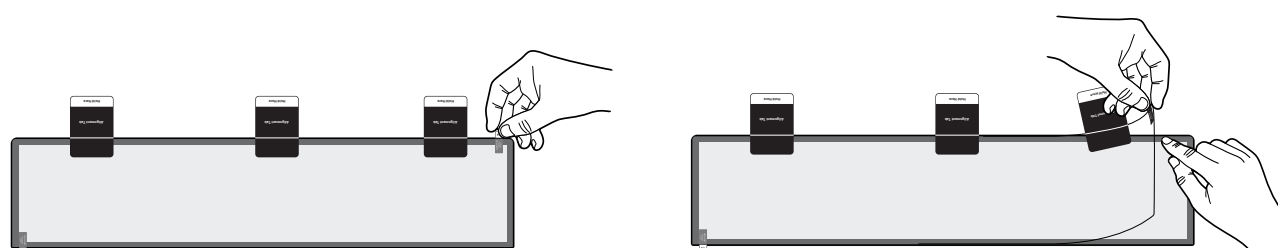
Once you've confirmed the screen is clean, delicately peel off the protective layer by gently pulling on tab 1.

STEP 7



Utilize the squeegee to gently apply pressure, removing any air pockets or bubbles from the screen.

STEP 8

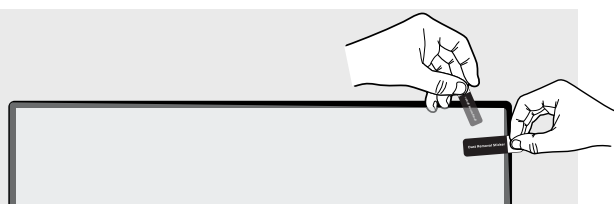


Repeat the previous step to ensure all remaining air pockets and bubbles are eliminated. Release the alignment tab from the side of the device. With one hand, hold the screen and then peel off the top layer by pulling tab 2, which is the side facing the surface.

STEP 9



Check thoroughly to ensure there are no remaining air pockets, completing the application process.



If you happen to spot any dust particles trapped on the screen, attach a dust remover tab to the screen protector. Gently lift the protector, use a second dust remover tab to eliminate the dust, and then proceed with **step 9** to complete the application.



Tiny bubbles might be visible initially and could take up to 24 hours to naturally dissipate.